

Sailing Instructions

VRC Summer Regatta 2023

July 8th – 9th



Preamble

The notation '[NP]' in a rule of the sailing instructions (SIs) means that a boat may not protest another boat for breaking that rule. This changes RRS 60.1(a).

1 RULES

- 1.1 The event is governed by the rules as defined in *The Racing Rules of Sailing*.

2 CHANGES TO SAILING INSTRUCTIONS

- 2.1 Any change to the sailing instructions will be posted before 0900 on the day it will take effect, except that any change to the schedule of races will be posted by 2000 on the day before it will take effect.

3 COMMUNICATIONS WITH COMPETITORS

- 3.1 Notices to competitors will be posted on the official notice board located at <https://www.racingrulesofsailing.org/documents/6403/event>.
- 3.2 The race office is located at Vancouver Rowing Club located at 450 Stanley Park Drive, Vancouver, BC, telephone 604-687-3400, email raceofficer@vrcracing.ca.
- 3.3 On the water, the race committee intends to monitor and communicate with competitors via **VHF radio on channel 68** (called the *Regatta VHF* hereafter).
- 3.4 All Boats shall notify the race committee of their intention to race prior to 1045 hours at the beginning of each day by providing their boat name and sail number to the race committee by *Regatta VHF*, or by approaching the signals boat and hailing. Failure to comply with this instruction may result in the bot being scored "Did Not Start" without a hearing. This changes RRS A4 and RRS A5.

4 CODE OF CONDUCT

- 4.1 [DP] Competitors and support persons shall comply with reasonable requests from race officials.

5 SIGNALS MADE ASHORE

- 5.1 Signals made ashore will be displayed at will be delivered to the fleet via email to the email address supplied to VRC during registration.
- 5.2 When an email is delivered to the fleet signalling a postponement in lieu of raising flag AP, '1 minute' is replaced with 'not less than 45 minutes.' This changes Race Signals AP.

6 SCHEDULE OF RACES

See NoR 7.



7 CLASS FLAGS

See NoR 4.8.

8 RACING AREA

See NoR 8.

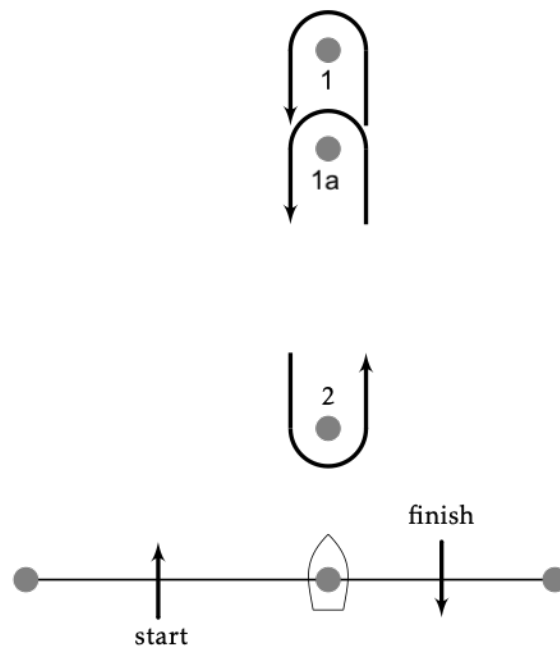
9 COURSES

9.1 Short-Course Races

Course designations will be communicated to competitors using a course board located on the race committee signal boat prior to the warning signal for each Division.

The diagram below shows the courses, including the approximate angles between legs, the order in which marks are to be passed, and the side on which each mark is to be passed.

Divisions 1 and 2 shall use mark 1 and mark 2. Divisions 3, 4, 6 and 7 shall use mark 1a and mark 2.



- Course L1: Start – 1(a) – Finish
- Course L2: Start – 1(a) – 2 – 1(a) – Finish
- Course L3: Start – 1(a) – 2 – 1(a) – 2 – 1(a) – Finish

9.2 Mid-Distance Races

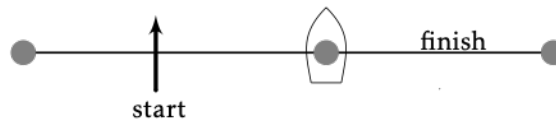
The mid-distance coastal race course will be displayed on the course board prior to the warning signal for each Division. The approximate course length is 10nm to 15nm.

The Marks are to be rounded in the sequence they appear on the course board, which shall be displayed on the race committee signal vessel.

When the race committee displays a green flag, all non-gate marks are to be rounded to starboard. When the race committee does not display a green flag, all non-gate marks are to be rounded to port. Boats shall sail between the gate marks from the direction of the previous mark and round either gate mark.

The race committee may fly signal flag "TANGO" indicating the course is to be sailed twice around, using the start line as a gate beginning the second lap around the course.

marks as per course board



10 **MARKS**

10.1 Short-Course Races

Mark 1 will be a yellow MarkSetBot inflatable robotic mark.

Mark 1a will be an orange MarkSetBot inflatable robotic mark.

Mark 2 will be a yellow MarkSetBot inflatable robotic mark.

The starting mark will be a floating staff displaying an orange flag.

The finishing mark will be a floating staff displaying a blue flag.

10.2 Mid-Distance Races

The letters/marks will be as per Appendix A of these sailing instructions.

11 THE START

- 11.1 The starting line is between a staff displaying an orange flag on the signal vessel and the course side of the starting mark displaying an orange flag.
- 11.2 There may be an inflated tetrahedron attached to the race committee signals vessel as a spacer mark. The spacer mark and any lines attached to it are part of the race committee signals vessel. Boats shall not sail between the spacer mark and the signals vessel. Any boat sailing between the spacer mark and the race committee signals vessel shall be subject to protest by the race committee.
- 11.3 [NP] Boats whose warning signal has not been made shall avoid the starting area during the starting sequence for other races.
- 11.4 If any part of a boat's hull is on the course side of the starting line during the two minutes before her starting signal and she is identified, the race committee will attempt to broadcast her sail number on the *Regatta VHF* channel. Failure to make a broadcast or to time it accurately will not be grounds for redress. This changes RRS 62.1(a).
- 11.5 If any part of a boat's hull is on the course side of the starting line at her starting signal and she is identified, the race committee will attempt to hail her sail number. Failure to hail her number, failure of her to hear such a hail, or the order in which boats are hailed will not be grounds for redress. This changes RRS 62.1(a).
- 11.6 A boat that does not start within fifteen (15) minutes after her starting signal will be scored Did Not Start without a hearing. This changes RRS A5.1 and A5.2.

12 CHANGE OF THE NEXT LEG OF THE COURSE

- 12.1 To change the next leg of the course, the race committee will move the original mark or the finishing line to a new position.

13 THE FINISH

13.1 Saturday July 8, 2023

- a) Divisions 1, 2, 3, 4 & 7 - Windward Leeward Courses

The finishing line is between a staff displaying a blue flag on the race committee signal vessel and the course side of a finishing mark displaying a blue flag.



b) Division 5 (Cruising) – Mid-Distance Coastal Race

The finishing line is between a staff displaying a blue flag on the race committee signal vessel and the course side a finishing mark displaying a blue flag.

13.2 Sunday July 9, 2023

a) Divisions 4 (Sport) & 6 (ASA of BC Martin 16) - Windward Leeward Courses

The finishing line is between a staff displaying a blue flag on the race committee signal vessel and the course side of a finishing mark displaying a blue flag.

b) Divisions 1, 2, 3, 5 (Cruising) & 7 – Mid-Distance Coastal Race

The finish line for all divisions is between a staff displaying a blue flag on the race committee signal vessel and a finishing mark displaying a blue flag.

13.3 If the race committee is absent when a boat finishes, she shall report her finishing time, and her position in relation to nearby boats, to the race committee at the first reasonable opportunity.

13 Time Limits

See NoR 1.5.6.

14 HEARING REQUESTS

14.1 The protest time limit is 1730 hours on the day of racing.

14.2 Hearing request forms shall be completed online using the racingrulesofsailing.org website at:

https://www.racingrulesofsailing.org/protests/new?event_id=6403

14.3 Notices of protests by the race committee or protest committee will be posted using the racingrulesofsailing.org website to inform boats under RRS 61.1(b) at the following address:

<https://www.racingrulesofsailing.org/schedules/6403/event>

14.4 Hearings will be heard in person. Whenever possible, protests will be heard in the approximate order in which they were received.

14.5 Hearings will be heard beginning at 1900 hours on Tuesday July 11, 2023. Parties to a protest will be contacted before Monday after



the race and at least 24 hours before the hearing. Parties are responsible for informing their own witnesses and ensuring their witnesses' attendance.

15 SCORING

See NoR 11.

16 EQUIPMENT AND MEASUREMENT CHECKS

- 16.1 A boat or equipment may be inspected at any time for compliance with the class rules, notice of race and sailing instructions.

APPENDIX A—Mid-distance course marks

"A"	Point Grey Bell Buoy N 49°17.3' W 123°15.9'
"B"	Kits Barge Buoy N 49°16.9' W 123°09.8'
"C"	QC Buoy N 49°18.2' W 123°10.0'
"D"	QB Buoy N 49°19.0' W 123°12.1'
"E"	VRC Mark: Committee shall communicate position
"F"	Separate Finish Line: On course between two staffs w/blue flags
"G"	Race Start Pin: On course as a floating staff w/orange flag
"H"	Start Line Gate: On course between Signal Boat and Race Start Pin
"K"	VRC Windward Inflatable: Committee shall communicate position and colour
"P"	Passage Island
"W"	VRC Windward Inflatable: Committee shall communicate position and colour
"Y"	VRC Leeward Inflatable: Committee shall communicate position and colour
"X"	Anchored Freighter: Committee shall communicate position
"Z"	Anchored Freighter: Committee shall communicate position

